



Belsize Lane NW3

Parkheath
Sold on Service



Camden
P Resident permit holders only
CA-B
Mon - Fri
9 am - 6.30 pm
Saturday
9.30 am - 1.30 pm



Belsize Lane, NW3

Guide Price £1,375,000

Share of Freehold

- A stunning top floor (2nd and 3rd) maisonette
- Set in distinguished detached red brick residence
- Roof top 12ft decked terrace with 360 degree panoramic views
- Amazing 25ft open plan living space
- Contemporary kitchen with island
- Vaulted ceiling and skylights, flooded with natural light
- 3 double bedrooms and 2 bathrooms
- 16ft main bedroom with en suite and access to balcony
- Share of freehold, 1130 sq ft approx
- Prominent position for Belsize Park, Hampstead and Hampstead Heath



Belsize Park/Hampstead
208 Haverstock Hill
NW3 2AG
Sales 020 7431 1234
Lettings 020 7431 3104
nw3@parkheath.com

South/West Hampstead
192 West End Lane
NW6 1SG
Sales & Lettings
Tel 020 7794 7111
192@parkheath.com

Kensal Rise
54-56 Chamberlayne Rd
NW10 3JH
Tel 020 8960 4845
kensal@parkheath.com

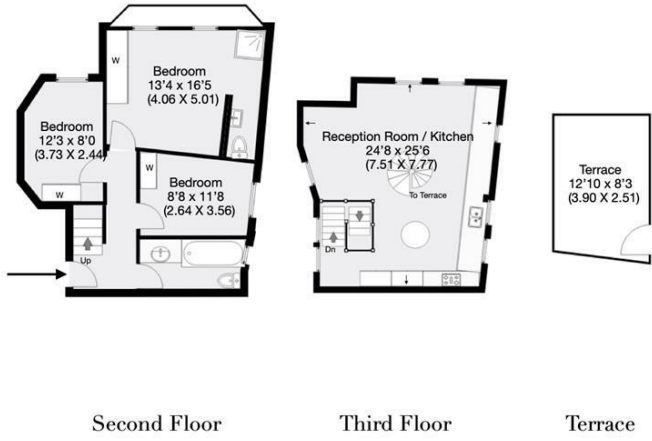
Property Management
192 West End Lane
NW6 1SG
020 7433 6174
pm@parkheath.com

Parkheath
Sold on Service

Camden Tax band F

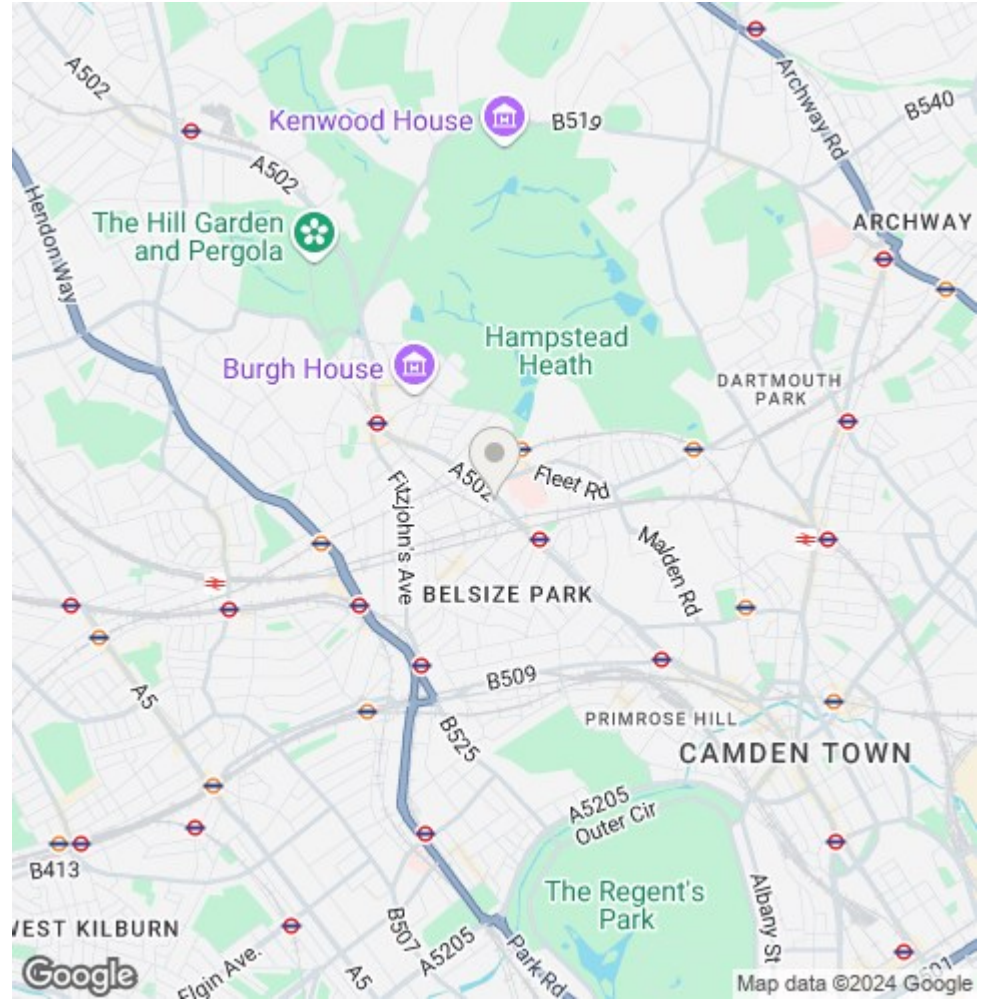
www.parkheath.com


Belsize Lane, London, NW5
 Approximate Gross Internal Area 105 sqm / 1130 sqft



THIS FLOOR PLAN IS PRODUCED FOR PARKHEATH SUBMITTED BY ARCHIMEDIA web: www.archi-media.co.uk

Whilst every attempt has been made to ensure the accuracy of the floor plan contained herein, measurements of doors, windows and rooms are approximate and no responsibility is taken for any error, omission or misstatement. These plans are for representation purposes only and should be used as such by any prospective buyer or lease. Specifically no guarantee is given on the gross internal floor area of the property if quoted on this plan and any figures given in initial guidance only and should be treated as such.



The particulars do not constitute part of an offer or contract. The particulars, including text, photographs and plans, are for the guidance only of prospective purchasers/tenants and must not be relied upon as statements of fact. The descriptions provided therein represent the opinion of the author and whilst given in good faith should not be construed as statements of fact. Nothing in these particulars shall be deemed a statement that the property is in good condition or otherwise or that any services or facilities are in good working order. All measurements are approximate